

The Growing Up in Australia study

Growing Up in Australia: The Longitudinal Study of Australian Children is conducted as a partnership between the Department of Social Services (DSS), the Australian Institute of Family Studies (AIFS) and the Australian Bureau of Statistics (ABS), with advice provided by a consortium of leading researchers.

How is the data used?

Growing Up in Australia is an ongoing study with information collected using a variety of methods including paper forms, online, telephone and face-to-face interviews.

The purpose of the Study is to provide data that enables a comprehensive understanding of development and life course trajectories within Australia's current social, economic and cultural environment. The Study gives policy-makers and researchers access to quality data and is used to help the government plan future policies and services.

To find out more about the data and how it is being used, please visit:

Website: <https://aifs.gov.au/growingupnow/>

Introduction to privacy

Your privacy is very important to us. Strict procedures are followed to ensure that only authorised people have access to the information provided to us and that all interviewers, researchers and others involved in the Study comply with the *Privacy Act 1988*.

Information (including personal and sensitive information) is collected as part of *Growing Up in Australia*. Personal information is defined as any information or opinion about an identified individual. Of this information, any details relating to race, ethnicity or health are considered sensitive information. More information on privacy definitions as used in the Study are available at:

Website: www.oaic.gov.au/privacy/privacy-act/australian-privacy-principles



To gain a good understanding of the environment young people grow up in, it is important to collect some personal or sensitive information about all people the young person lives with (and any parental figures living elsewhere).

So that we can ensure that we are able to accurately track changes in households over time, people in your household may be given information that identifies other members of the household, such as their name and date of birth, in order to confirm whether the same or different people are in the household.

WHAT PERSONAL AND/OR SENSITIVE INFORMATION IS COLLECTED ABOUT YOU FROM OTHERS?

Parents/guardians of 14-15 year olds

You will be asked to either participate in a face-to-face or telephone interview, or complete a paper form.

Personal information about you may be collected from the young person and their other parent(s).

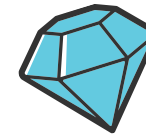
Examples of personal information that may be collected about you include details of relationships, education, work, income and contact details.

Parents/guardians of 18-19 year olds

You may be asked to participate in a telephone interview.

Personal information about you may be collected from the young person and their other parent(s).

Examples of personal information that may also be collected about you include details of relationships, financial support provided to the young person, and contact details.



Teenagers in the Study aged 14-15 years

Personal and sensitive information about you may be collected from your parents/guardians. This information relates to education, work, health, behaviour, personality and family relationships.

If your parent provides permission, personal information may also be collected about you from your English teacher. This includes information about your school, behaviour, programs and activities.

Young persons in the Study aged 18-19 years

Personal and sensitive information about you may be collected from your parents/guardians. This information relates to your health and their relationship with you.

Other members of households where an interview is conducted

If you live with someone who participates in a *Growing Up in Australia* interview, the following personal and sensitive information may be collected about you:

name, sex, age, date of birth, country of birth and year of arrival, language, Indigenous status, medical conditions and disability status. This information enables us to better understand the household study participants are living in.

Your information is collected and managed under the same privacy conditions as all study informants. You may choose to have your personal information not included in the Study at any time.



Growing Up in Australia data

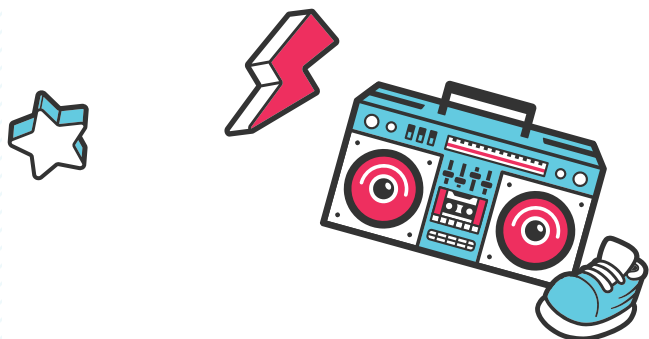
The ABS is collecting *Growing Up in Australia* information under the authority of the *Australian Bureau of Statistics Act 1975*. Information is collected from various informants including the young person, parents and/or guardians of the young person, and the English teacher of the 14-15 year old young persons. Any informant may choose to not take part or not answer particular questions. Information collected by the ABS for the *Growing Up in Australia* study is collected on a voluntary basis and will only be used for:

- Statistical purposes; and
- Maintaining contact with study participants for the purposes of the Study.

Data released to partner agencies, researchers and policy makers is de-identified (i.e. excludes names and addresses) and only combined results are published. Strict procedures are followed by all partner agencies to ensure that all information collected is kept strictly confidential.

If the organisation responsible for future data collection phases of the Study changes, the ABS will be required to disclose your information to that organisation.

Provision of information is voluntary and where consent is withdrawn, *Growing Up in Australia* will no longer collect data from the person withdrawing. Where consent for data linkage has previously been provided, participants must explicitly notify the Study if they wish to withdraw their consent to any further release of their linked data. Data previously released to researchers will continue to be used and form part of the *Growing Up in Australia* study.



Under the *Privacy Act 1988*, you are entitled to access, or seek correction of, personal information held about you by the Study.

You can do this at any time by contacting the *Growing Up in Australia* study by:

Emailing: growingup@updatedetails.
growingupinaustralia.gov.au

Calling: 1800 005 508 free call (excluding mobile phones)

Writing to: *Growing Up in Australia*, Reply Paid
76746, SYDNEY NSW 2000

Further information

Further information on privacy in relation to the *Growing Up in Australia* study and the *Growing Up in Australia* Privacy Statement can be found at:

Website: <https://aifs.gov.au/growingupnow/privacy-statement>

Phone: 1800 005 508 (free call excluding mobile phones)

Further information on privacy in relation to the ABS including the ABS Privacy Policy can be found at:

Website: www.abs.gov.au/privacy

Phone: 02 6252 7203

If you have a privacy complaint in relation to the *Growing Up in Australia* study, you may lodge a complaint by:

Emailing: privacy@abs.gov.au

Writing to: The ABS Privacy Officer, Locked Bag 10,
Belconnen ACT 2617

For general advice on privacy, or if you are not satisfied with the ABS Privacy Officer's response, you can contact the Office of the Australian Information Commissioner by going to the:

Website: www.oaic.gov.au/privacy/making-a-privacy-complaint

Writing to: GPO Box 5218, Sydney NSW 2001



The Longitudinal Study of Australian Children

PRIVACY INFORMATION

